



ENGINEERS FOUNDATION OF OHIO

Advancing Engineering Education in Ohio

400 South Fifth Street • Suite 300 • Columbus, Ohio 43215-5430
614-223-1177 • efo@ohioengineer.com • www.ohioengineer.com

ENGINEERING SCHOLARSHIPS

For academic year 2023-2024

In cooperation with:

University of Akron
Case Western Reserve University
Cedarville University
Central State University
University of Cincinnati
Cleveland State University
University of Dayton
Kent State University
Miami University

University of Mount Union
Mount Vernon Nazarene University
Muskingum University
University of Notre Dame
Ohio Northern University
The Ohio State University
Ohio University
University of Toledo
Youngstown State University
Wright State University

ENGINEERS FOUNDATION OF OHIO

The Engineers Foundation of Ohio (EFO) is a 501(c)(3) nonprofit educational foundation closely aligned with the Ohio Society of Professional Engineers (NSPE-OH). Formed to raise the funds for educational programs through the most efficient means possible, EFO has implemented programs for math, science and technological aptitudes of Ohio's youth. Programs for engineers include development of managerial skills.

MATHCOUNTS: EFO's "flagship" program, currently serves 13,000+ middle school children statewide in local chapter math competitions.

IMAGINE ENGINEERING: 2nd grade coloring contest introduces over 7,500 children to the exciting field of engineering each year.

SCHOLARSHIPS: Scholarships are offered each year to Ohio's brightest engineering students. The NSPE Foundation has provided more than \$1 million in scholarships over the years, as well.

ENGINEER AS LEADER WORKSHOP: Helps young engineering students and career-changing veterans learn the finer points of managing human relations and leadership challenges.

OHIO SOCIETY OF PROFESSIONAL ENGINEERS

The Ohio Society of Professional Engineers (NSPE-OH) is the only organization devoted exclusively to the professional, ethical, economic and social well-being of professional engineers. It's the single, most powerful voice for all branches of the profession.

NSPE-OH was founded in 1878 by a group of engineers and surveyors to advance the interests of engineering and surveying in Ohio. Surveying has always been closely aligned with engineering, with many historical figures including George Washington and Thomas Jefferson having been educated in both professions.

Today the Society is a growing nonprofit professional society. It is governed by a Board of Directors composed of officers and representatives from each of the state's 12 chapters. Through its five practice divisions, the Society represents the essential areas of engineering practice: industry, private practice, construction, government and education. Chapters provide members with local newsletters, professional development training and inspiring speakers, and a large number of social activities.

Together, the Ohio Society of Professional Engineers and the Engineers Foundation of Ohio are making great strides in advancing engineering education in Ohio.

General Information

The scholarships listed in this brochure are offered to students who have been admitted to engineering programs approved by the Accreditation Board of Engineering and Technology (ABET), and who seek financial assistance to pursue this education.

The scholarships are administered by the Engineers Foundation of Ohio (EFO), a non-profit educational foundation dedicated to the advancement of engineering education in cooperation with the National Society of Professional Engineers (NSPE) and the Ohio Society of Professional Engineers (NSPE-OH).

The funding for the scholarships described herein is provided by the named sponsor(s) and is subject to the continued funding by the sponsor(s) for the stated period. EFO and its Scholarship Committee cannot guarantee that the sponsor(s) will provide the necessary funding, and they cannot be responsible for funding if sponsor(s) terminate the funding of the scholarship at anytime.

To be eligible for these scholarships, a student must meet all of the following criteria:

- be a graduating high school senior (exceptions noted in individual scholarship descriptions);
- have at least a 3.0 (A=4.0) grade point average;
- meet the minimum SAT (Math=600, Reading or Composition=500) or ACT (Math=29, English=25) test scores as set by the National Society of Professional Engineers; &
- be a citizen of the United States and a permanent resident of the State of Ohio.

Additional criteria is specified for some scholarships. Please read each description carefully.



Engineers Foundation of Ohio Scholarships are made possible through underwriting from the following generous donors:

- Barber & Hoffman, Inc.
- Engineers Foundation of Ohio
- Franklin County Chapter of the Ohio Society of Professional Engineers
- National Society of Professional Engineers
- National Society of Professional Engineers Auxiliary
- North Central Chapter of the Ohio Society of Professional Engineers
- Northeast Chapter of the Ohio Society of Professional Engineers
- Ohio Society of Professional Engineers

The Engineers Foundation of Ohio would also like to thank those companies and individuals who have supported all scholarships by contributing during the past year. These contributions assist in providing the EFO portion of these scholarships. Contributions to the Engineers Foundation of Ohio are tax deductible to the extent allowed by law.

ENGINEERS FOUNDATION OF OHIO SCHOLARSHIPS

Lloyd A. Chacey, P.E. – Ohio Society of Professional Engineers – Memorial Scholarship

- > \$2,000/year
- > Renewable for up to one year.
- > One chosen each year.

The Ohio Society of Professional Engineers established the Lloyd A. Chacey, P.E. Scholarship in 1977 as a lasting tribute to this longtime executive secretary. Lloyd served in this capacity for 27 years until 1970. In addition, he was executive director of the Engineers Foundation of Ohio from its founding in 1964 until his retirement in 1980.

Lloyd was a shining personification of true professionalism throughout his life, which included stints as a teacher and missionary, as well as an engineer and surveyor. He defined professionalism as "the desire to apply the Golden Rule (our Code of Ethics) to the technical knowledge of the world, by persuasion."

Accorded numerous awards and accolades throughout his career, including the NSPE-OH Citation (highest honor NSPE-OH can bestow upon one of its members), and a honorary Doctorate of Engineering from Ohio Northern University, Lloyd established this scholarship to help future engineers to be the crowning tribute of a lifetime of service. It is hoped that recipients of this grant will feel inspired and challenged to initiate the selfless giving to the engineering profession and humankind exemplified by Lloyd A. Chacey, P.E.



Lloyd A. Chacey, PE

The scholarship is to be applied to the student's tuition, fees and other educational expenses.

Please note: *Criteria in addition to "General Criteria" found in the front of this pamphlet include the following:*

- * *Be a son, daughter, brother, sister, niece, nephew, spouse or grandchild of a current member of the Ohio Society of Professional Engineers or so related to a deceased member who was in good standing at the time of his or her death. Student members are not considered NSPE-OH members for purposes of awarding this scholarship.*
- * *Be enrolled full-time at an Ohio college or university in a curriculum leading to a Bachelor of Science degree in engineering or its equivalent.*
- * *Will achieve junior status at the end of the academic year in which the application is submitted. Junior status is defined as meaning the applicant can complete requirements for the degree in two more academic years progressing at a normal rate. Co-op students who meet these criteria are eligible.*

Applicants will be evaluated on "General Criteria" as well as activities/leadership/work experiences, membership and activity in professional and technical societies, honors won, and an evaluation by the engineering college dean or department chairman. Financial need will be considered as a deciding factor in case of a tie.

Cyril W. Neff, P.E., P.S., Memorial Scholarship

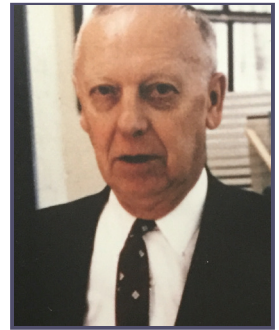
- > *\$2,500/year*
- > *Renewable for three years.*
- > *One chosen each year.*

Cyril W. Neff, P.E., P.S., had a special interest in young engineers and in helping them get started in their professional lives. In memory of his lifelong accomplishments, the Neff family established this scholarship in his name.

Mr. Neff was a 1917 graduate of Loyola High School and a 1923 cum laud graduate of the University of Notre Dame with a degree in civil engineering. He worked with the City of Cleveland, Cuyahoga County Engineer and State of Ohio Department of Highway Engineers, Division 12.

In 1946 he started his own private practice which today is in its third generation as a successful consulting firm.

This scholarship is available to students from Cuyahoga, Lorain, Lake, Geauga, Medina and Ashtabula counties only, entering Ohio colleges or the University of Notre Dame.



Cyril W. Neff, PE, PS

Raymond H. Fuller, P.E., Memorial Scholarship

- > *\$1,000/year*
- > *Non-renewable*
- > *One chosen each year.*

The Raymond H. Fuller, P.E., Memorial Scholarship was established by his wife, Rhoda M. Fuller, in 1999, as a tribute to his lifelong accomplishments and his desire to promote the engineering profession to young people.

The couple's son, Robert H. Fuller, P.E., was president of the Engineers Foundation of Ohio in 1998-1999. He was instrumental in creating this scholarship in his father's memory.

Consideration will be given to the prospective recipient's academic achievement, interest in a career in engineering and financial need as determined by interviews and from references.

Recipients must be accepted for enrollment at an Ohio college or university.



Raymond H. Fuller, PE

Peter Peterson–University of Toledo – Memorial Scholarship

- > *\$1,200/year*
- > *Renewable for three years.*
- > *One chosen each year.*

The family of Peter Peterson (all are alumni of the University of Toledo) established the fund in memory of their father, who was a practicing engineer in Toledo. The family is pleased to continue its support of deserving engineering students by joining with the University of Toledo and the Engineers Foundation of Ohio to sponsor this scholarship.

The University of Toledo serves more than 24,000 students from 34 states and 40 foreign countries. The College of Engineering enrolls 2,500 and offers ABET accredited departmental programs in chemical, computer science, civil, electrical, industrial and mechanical engineering, with opportunities for interdisciplinary and interdepartmental programs through the selection of elective courses that permit study in energy, environment, materials, transportation, computers, biomedical, nuclear, management and other current fields.

The college offers the important combination of quality engineering programs and opportunities for interaction with the urban-industrial environment. This is evidenced through the classroom activity, part-time employment, seminars and projects with the result that the graduates are well qualified and professionally oriented. The curricula are strong in fundamentals, yet lead to specialization in the junior and senior years. The faculty is dedicated to providing quality education with maximum attention to student needs. Both the college and university offer modern facilities for the educational and personal benefit of the student on an attractive campus in a pleasant residential area of Toledo. ***Recipients must be accepted for enrollment at the University of Toledo.***

Melvin Bauer, P.E., P.S. – Ohio Society of Professional Engineers, North Central Chapter – Memorial Scholarship

- > *\$500/year*
- > *Nonrenewable*
- > *One chosen each year.*

Melvin M. Bauer, P.E., P.S., had an interest in promoting the engineering profession to young people and was himself the recipient of a scholarship that gave him the impetus he needed to follow his dream of becoming an engineer. In memory of Mel, the Bauer Family has established this scholarship in his name. Mr. Bauer was a 1950 graduate of Savannah High School, a 1954 cum laud graduate of Ohio University with a degree in civil engineering and surveying, and a city engineer for Ashland for 29 years.

The North Central Chapter of NSPE-OH has a continuing interest in providing assistance for young engineers. In honor of Melvin Bauer as an active member, the chapter has cosponsored this scholarship. **This scholarship is available to students from Ashland, Richland, Wayne, and Crawford counties only, entering Ohio Colleges.**

G. Brooks Earnest – Ohio Society of Professional Engineers, Northeast Chapter – Memorial Scholarship

*** NOT AVAILABLE THIS YEAR ***

- > \$1,000/year
- > Renewable for three years.
- > One chosen every four years (2023, ...).

This scholarship is open to students from **Ashtabula, Cuyahoga, Geauga or Lake county**, entering **Case Western Reserve University or Cleveland State University**.

G. Brooks Earnest **was** Dean of Engineering and President of Fenn College. He oversaw the transfer of the school to the State of Ohio in order to form CLEVELAND STATE UNIVERSITY.

Earnest attended Case Institute of Technology, receiving a Civil Engineering degree in 1927. In 1930 he joined the faculty of Case Institute as an instructor of engineering, earning his M.S. in 1933. He became Professor of Engineering Surveying and director of Camp Case in 1948. Earnest left Case in 1951 to become Dean of Engineering at Fenn College and was made President of the college in 1952. In 1965 Fenn College became the nucleus of Cleveland State University. The following year Earnest became director of the Fenn Educational Foundation, a non-profit corporation. Under his leadership, nearly half a million dollars was contributed for the development of cooperative education programs in Northeast Ohio.



G. Brooks Earnest

C. Merrill Barber, P.E., Memorial Scholarship

*** NOT AVAILABLE THIS YEAR ***

- > \$1,000/year
- > Renewable for three years
- > One chosen every four years (2023 ...).

Barber & Hoffman, Inc., scholarship sponsor, is primarily interested in students pursuing a course in civil or structural engineering. The scholarship will not be limited to these degrees due to the fact that many enrolling freshman have not selected a specific branch of engineering.

The scholarship is open to students from the northeastern area of Ohio. The applicant must demonstrate both high scholastic achievement and individual contribution to the well-being of society. ***The recipient must be accepted for enrollment at Case Western Reserve University or Cleveland State University.***

Joe Niedecken, PE, "Pay It Forward" – University of Cincinnati – Memorial Scholarship

- > \$1,000/year
- > Renewable for three years
- > Four chosen every four years (2020, 2024,...)

*** NOT AVAILABLE THIS YEAR ***

Joe Niedecken was a past EFO scholarship recipient and chose to "Pay Forward" the gifts he had been given as a young engineering student. His family has honored his wishes by establishing this scholarship. Known for his intelligence, his work, his commitment to safety, and his love for family and adventure, Niedecken's legacy includes compassion and giving. Niedecken graduated *magna cum laude* from the University of Cincinnati in 1988 with a bachelor of science degree in chemical engineering. Later, as a licensed professional engineer, Niedecken was known for his commitment to safety and his distinguished career in the petroleum and refining industries, which spanned nearly 30 years.

Recipients must be planning to be majoring in engineering and attend the University of Cincinnati to apply for the scholarship.



Joe Niedecken, PE

Roger Loveless, P.E., Memorial Scholarship

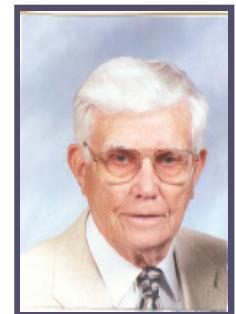
- > \$1,000/year
- > Renewable for up to three years
- > One chosen each year (if not renewed by previous recipient)

Roger Loveless, PE, was a graduate from The Ohio State University with a degree in Civil Engineering. His career included being a major in the Army Corps of Engineers. He retired as the Chairman of Alden E. Stilson & Associates Professional Engineers and Surveyors. Roger is a past president of The Ohio Society of Professional Engineers and served as a director of the National Society of Professional Engineers.

Please note: Criteria in addition to "General Criteria" found in the front of this pamphlet include the following:

- Be accepted and enrolled full-time at an Ohio college or university in an ABET-accredited engineering program.
- Will achieve freshman, sophomore, junior or senior college status when the scholarship is distributed.

Applicants will be evaluated on "General Criteria" as well as activities/leadership/work experiences, membership and activity in professional and technical societies and honors won.



Roger Loveless, PE

Engineers Foundation of Ohio General Fund Scholarship



- > \$1,000/year
- > Non-renewable
- > One chosen each year.

Applicants will be evaluated on "General Criteria" as well as activities, leadership, work experiences, membership and activity in professional and technical societies, honors won, and an evaluation by the engineering college dean or department chairman. Financial need will be considered as a deciding factor in case of a tie.

- Will achieve college junior or senior status at the end of the academic year in which the application is submitted. Junior status is defined as meaning the applicant can complete requirements for the degree in two more academic years progressing at a normal rate. Co-op students who meet these criteria are eligible.
- Be enrolled full-time at an Ohio college or university in a curriculum leading to a Bachelor of Science degree in engineering or its equivalent.

Franklin County Chapter of the Ohio Society of Professional Engineers Scholarship



- > \$1,000/year
- > Non-renewable
- > Two chosen each year.

The scholarship is funded by the Franklin County Chapter of the Ohio Society of Professional Engineers. Recipients must meet the criteria listed in "General Information." Consideration will be given to the prospective recipient's academic achievement, activities, special recognitions and honors, work experience and their interest in a career in engineering. The winner will be chosen by members of the chapter.

Recipients may be accepted for enrollment at any college or university and they must be entering an ABET accredited engineering program. Recipients must live in one of the following counties: Delaware, Fairfield, Franklin, Hocking, Knox, Licking, Madison, Marion, Morrow, Muskingum, Perry, Pickaway, Ross or Union.

National Society of Professional Engineers Auxiliaries' Scholarships



For all NSPE scholarship information and an application, refer to www.nspe.org (type the word "scholarship" in the search area and click "Search"). NSPE scholarships may require additional application materials and may have a different application deadline.