



# Columbus Engineer

Official Publication of the Franklin County Chapter of the  
Ohio and National Societies of Professional Engineers

## President's Message

by Kevin Ernst, P.E. - FCC President



I would like to thank John Greenhalge, Executive Director of the Ohio State Board of Registration for Professional Engineers and Surveyors for his presentation at the chapter's September luncheon. John provided an outstanding summary of new rules and potential

legislation affecting the engineering profession including a change being proposed is to require two professional

development hours within the 2-year registration cycle to be on a topic related to ethics. The presentation was well received with considerable interaction with the attendees!

This month's luncheon on October 20th will include a presentation about bridge inspection using rope technology by Michael Seal of Burgess & Niple, so bring you lassos and join us! Also if you are attending the Ohio Transportation Engineering Conference (OTEC) at the Columbus

(Presidents Message continued on Page 2.)

## OSPE-FCC October Luncheon Program

**Date:** Thursday October 20, 2016

**Place:** La Scala Restaurant  
4199 W. Dublin Granville Rd., Dublin, OH

**Time:** Registration: 11:30 am

**Lunch:** 11:50 am

**Speaker:** 12:00 pm

**Closing Remarks:** 1:00 pm

**Cost:** Members: \$20.00 & Non-Members: \$30.00.

**Registration:** Visit [fccospe.org](http://fccospe.org). Pay at door or online at ([www.fccospe.org](http://www.fccospe.org)). No access to computer contact Jim Arnold, 614-299-2133, to help with registration.

**TOPIC SUMMARY:** For this luncheon Mr. Seal will discuss the rise and acceptability of rope access and other alternative work at height methods in the construction, energy, and engineering field. Every engineering project factors worker and site safety into consideration, and worker falls consistently rank as a primary cause of preventable work site injuries and deaths. Rope access has an exemplary



track record of worker safety, better than traditional access methods. This work method frequently allows workers to perform their duties at locations that negate the need for expensive and cumbersome scaffolding, cranes, and traffic control. However, the regulatory framework for this work method is often confusing, and the work method itself is often misunderstood. This luncheon will supply an introduction on what rope access is, how it can be used in different work environments, and what you should be mindful of as an owner, contractor, or design professional when deciding to implement it into you project.

**PRESENTER:** Michael Seal, PE (Senior Bridge Engineer) Mr. Seal joined Burgess & Niple in June 2000 as an engineer in the Facility Inspection Section. He is involved with inspections and evaluations of bridges, dams, river locks, and other structures. He has experience with the use of rope access, fall protection, and technical access for hundreds of bridges and dams, including many of the largest bridges in the US. He is a Level 3 Supervisor for SPRAT (Society of Professional Roped Access Technicians). He is a former member of the Board of Directors for SPRAT, and is a 2-term President for the association. He is an OSHA Competent Person for fall protection. He holds a Bachelor of Science degree in Civil Engineering from The Ohio State University and is a registered Professional Engineer in ten states.

-----  
A certificate for 1 hour of Professional Development for attending the program will be presented at the luncheon.

(Presidents Message continued from Page 1.)

Convention Center on October 25th and 26th, please visit our chapter's booth: #715. OTEC 2016 marks the 70th annual meeting of this statewide conference attended by over 3,750 people nationally. OTEC provides something for everyone interested in Ohio's transportation industry. The program addresses the latest policy and technical information, as well as new ideas in transportation policy, planning, environmental, design, construction, maintenance, operation, local government, and the management of transportation resources. I hope to see you there!

**FCC Auxiliary October Meeting**

The Auxiliary to the Franklin Co. Chapter of OSPE will meet for a noon luncheon on Tuesday, October 18, at Brookside Country Club, 2770 W. Dublin Granville Road, Columbus, Ohio 43235. Sarah Duplesses will give a presentation on "Food For Thought".

Guests are always welcome. To make a reservation, call Jean Mitchell at 614-262-7071.

**OUR LUNCHEON PROGRAMS – Part One**

by Leon Winget, PhD, PE

Our 2016-2017 luncheon programs have kicked-off with a great presentation by Mr. John Greenhalge, Executive Director of the Ohio State Board of Registration for Professional Engineers and Surveyors. Mr. Greenhalge presentation was a very detail explanation of our responsibilities as professional engineers. Although, it has not yet passed the legislature, the law requiring two hours of ethics/rules as part of our 30 hours of biennium CPDs, is in the process. If not this year, it should pass next year. Ethic/rules include the principal concepts that we as professionals must abide; one definition "Ethics involves systematizing, defending, and recommending concepts of right and wrong conduct".

Our luncheon programs as well as our Columbus Engineer (CE), in addition to informing our members of our ongoing activities, are important avenues to inform our members of recent and new developments in engineering and science related to engineering principles. Our programs allow our members to earn one CPD for each session for a total of six CPD's each FY. The programs must be directed toward technology, ethics/rules or management.

Four of our programs have been set for this Fiscal Year (FY). We hope to have the other two programs for the FY 2016-2017, confirmed by the end of 2016. We have six luncheons each FY year. Should you have any projects that you would

like to have dissected, please contact either our President Kevin Ernst (kevin.ernst@terracon.com) or Program Chair Leon Winget (lewinget@att.net).

Our next three programs include the inspection of bridges and other structures using rope-technology, the finishing touches of the US-23 over I-270, and "The Structural Perspective of the OSU North Residential District Transformation." Please see the 2016-17 Calendar in this issue of CE for programs listed.

At the present time, we are looking forward to the following possible projects. Enhancement of the Buckeye Lake Dam, 3-D and its impact on engineering design, Self-driving cars, and Robotic enhancement of engineering design and build. Should you have input or know anyone who would be an excellent presenter on any of these concepts, please let us know.

Other interesting projects are the OSU Buckeye Bullet, which broke the ground speed record; the OSU EcoCon Car Design, which won the top place by the EPA. The engineering input by the OSU engineers should be quite interesting and educational. Any suggestions for luncheon topics by our members will be greatly appreciated.

We will be waiting for you suggestions. Should you wish to join the Program Committee, please contact lewinget@att.net.





# Columbus Engineer

## 2016-2017 OFFICERS, TRUSTEES & COMMITTEE CHAIRS

	Name	Phone # (w) or (h)	Cell Phone #	E-mail Address
President	<b>Kevin Ernst, PE</b>	614-863-3113 (w)	614-203-1199 (cell)	kevin.ernst@terracon.com
Chapter Secretary	<b>Steve Wilson, PE</b>	614-933-2246 (w)	614-832-5019 (cell)	sfwilson@aep.com
Treasurer	<b>Steve Day, PE</b>	614-876-7525 (w)	614-531-2858 (cell)	lday1@columbus.rr.com
Past President	<b>Paul F. Junk, PE, PS</b>	740-363-4462 (h)	740-972-1915 (cell)	pjunkk1@columbus.rr.com
Administrative Assistant	<b>Nancy Mergel</b>	614-863-3134 (h)	614-863-3134 (fax)	OSPEFCC@aol.com
	<b>NEW FCC-OSPE Website</b>			www.fccospe.org
OSPE Executive Director	<b>Tim Schaffer</b>	614-223-1144 (w)		exec@ohioengineer.com
OSPE/EFO Staff	<b>Pam McClure</b>	614-223-1144 (w-OSPE)		admin@ohioengineer.com
	<b>Holly Ross</b>	614-223-1177 (w-EFO)		pr@ohioengineer.com
<b>VICE-PRESIDENT</b>	<b>TRUSTEE/COMMITTEE</b>	<b>CHAIRPERSON</b>	<b>TELEPHONE</b>	<b>E-MAIL</b>
Ben Brown, PE	President-Elect	Ben Brown, PE	614-468-1200 (b) 614-519-8978 (cell)	benbrown@cmtengr.com
	Programs/CPD/Activity	Leon Winget, PhD, PE	614-395-8249 (cell)	lewinget@att.net
	Membership	Ron Eifert, PE	614-885-4138 (h) 614-315-9551 (c)	roneifert@aol.com
	Young Engineer Trustee	Josh Otworth, EI	614-468-1208 (w) (cell)	jotworth@cmtengr.com
	Retired Engineers Trustee	Ron Eifert, PE	614-885-4138 (h) 614-315-9551 (c)	roneifert@aol.com
	PEHE Trustee	Alden Jenkins, MBA, PE, PS	614-891-9431 (h) 614-287-3693 (w)	ajenkin2@csc.edu
	Chapter Directory	Steve Wilson, PE	614-552-1714 (w) 614-832-5019 (cell)	sfwilson@aep.com
Paul F. Junk, PE, PS	Vice-President	Paul F. Junk, PE, PS	740-363-4462 (h) 740-972-1815 (cell)	pjunkk1@columbus.rr.com
	Science Day (District)	Yogesh Rege, PE	614-328-5137 (w) 304-951-7847 (cell)	yogesh.rege@terracon.com
	Scholarship	Joe Sullivan, PE	614-486-4383 (w) 614-561-5447 (cell)	joe.sullivan@stantec.com
	Columbus Engineer Editor	Howard Jones, PE	614-209-3289 (h) 614-209-3289 (cell)	hrjones63@yahoo.com
	Engineers Week Luncheon	CR Weaver, PE	614-645-7100 (w) 614-946-2961 (h)	CRWeaver@columbus.gov
	Engineer For A Day	Charles Ohrstedt	614-937-1512 (cell)	mohrstedt@sbcglobal.net
	PEG Trustee	CR Weaver, PE	614-645-7100 (w) 614-946-2961 (h)	CRWeaver@columbus.gov
Tina Sutermeister, PE	Vice-President	Tina Sutermeister, PE	740-964-0828 (h) 740-964-0828 (cell)	tlsuterm@embarqmail.com
	MATHCOUNTS (Reg) Co-Chair	Joe Bolzenius, PE	614-498-0339 (w) 614-354-4933 (h)	joseph.bolzenius@hotmail.com
	MATHCOUNTS (Reg) Co-Chair	Ben Brown, PE	614-468-1200 (b) 614-519-8978 (cell)	benbrown@cmtengr.com
	Awards/Citations	Ron Eifert, PE	614-885-4138 (h) 614-315-9551 (c)	roneifert@aol.com
	Legislative	Steve Day, PE	614-876-7525 (w) 614-531-2858 (cell)	lday1@columbus.rr.com
	PEI Trustee	Tina Sutermeister, PE	740-964-0828 (h) 740-964-0828 (cell)	tlsuterm@embarqmail.com
	EFO Liaison	Steve Day, PE	614-876-7525 (w) 614-531-2858 (cell)	lday1@columbus.rr.com
Charles Ohrstedt, PE	Vice-President	Charles Ohrstedt, PE	614-937-1512 (cell)	mohrstedt@sbcglobal.net
	Imagine Engineering Contest	Devon Seal, PE	614-221-0678 (b) 614-208-6986 (cell)	devon_seal@gspnet.com
	Auxiliary Trustee	Jane Smith	614-451-6911 (h)	jecree@sbcglobal.com
	OSPE Director	Ron Eifert, PE	614-885-4138 (h) 614-315-9551 (c)	roneifert@aol.com
	Constitution & By-Laws	Devon Seal, PE	614-221-0678 (b) 614-208-6986 (cell)	devon_seal@gspnet.com
	PEPP Trustee	Gene Geiger, PE	614-328-5206 (w) 614-558-3327 (cell)	gene.geiger@terracon.com
	PEC Trustee	Yogesh Rege, PE	614-328-5137 (w) 304-951-7847 (cell)	yogesh.rege@terracon.com

Revised 10/09/2016

## 2016-17 CALENDAR

Oct. 11	5:30 p.m.	FCC Board Meeting @ Terracon Consultants, Inc.
Oct. 16	5:00 p.m.	Deadline for November <i>Columbus Engineer</i>
Oct. 20	11:30a.m.	<b>Program: Inspection of Bridges with Rope Technology – Michael Seal, Bridge Inspection Supervisor with Burgess &amp; Niple</b>
Nov. 8	5:30 p.m.	FCC Board Meeting @ Terracon Consultants, Inc.
Nov. 13	5:00 p.m.	Deadline for December <i>Columbus Engineer</i>
Nov. 17	11:30 a.m.	<b>Program: US23.I-270 Interchange Completion and Results – Brian Davidson, PE, Project Manager at ODOT District 6</b>
Dec. 13	5:30 p.m.	FCC Board Meeting @ Terracon Consultants, Inc.
Dec. 18	5:00 p.m.	Deadline for January <i>Columbus Engineer</i>
Jan. 10	5:30 p.m.	FCC Board Meeting @ Terracon Consultants, Inc.
Jan. 15	5:00 p.m.	Deadline for February <i>Columbus Engineer</i>
Jan. 19	11:30a.m.	<b>Program: “The Structural Perspective of the OSU North Residential District Transformation” - Jon Beier, P.E., LEED AP BD+C, Principal, SMBH, Inc.</b>
Feb. 14	5:30 p.m.	FCC Board Meeting @ Terracon Consultants, Inc.
Feb. 15	5:00 p.m.	Deadline for March <i>Columbus Engineer</i>
Feb. 11	8:00 a.m.	Regional Mathcounts Competition @ Columbus State Community College
Feb. 19-25		National Engineers Week (see <a href="http://www.eweek.org">www.eweek.org</a> )
Feb. 22	8:00 a.m. – 3:00 p.m.	Engineer for a Day Program
Feb. 23	11:30 a.m.	<b>Program: E-Week Luncheon</b>
Mar. 11	8:15 a.m. – 4:00 p.m.	Ohio Mathcounts Competition (OSPE, see <a href="http://www.ohioengineer.com">www.ohioengineer.com</a> )
Mar. 14	5:30 p.m.	FCC Board Meeting @ Terracon Consultants, Inc.
Mar. 15	5:00 p.m.	Deadline for April <i>Columbus Engineer</i>
Mar. 16	11:30a.m.	<b>Program: TBA</b>
Mar. 18		District Science Day
Apr. 11	5:30 p.m.	FCC Board Meeting @ Terracon Consultants, Inc.
Apr. 15	5:00 p.m.	Deadline for May <i>Columbus Engineer</i>
Apr. 20	11:30a.m.	<b>Program: TBA</b>
May 9	5:30 p.m.	FCC Board Meeting @ Terracon Consultants, Inc.
May 16	5:00 p.m.	Deadline for June <i>Columbus Engineer</i>
May 18	11:30 a.m.	Chapter Officer Installation/ Awards Luncheon
July (TBA)		FCC Budget Meeting - Location to be announced

Terracon Consultants, Inc. Address: 800 Morrison Road, Columbus, OH 43230



Civil & Environmental Consultants, Inc.

- ▶ Civil Engineering / Master Planning
- ▶ Ecological Sciences
- ▶ Environmental Engineering & Sciences
- ▶ Waste Management
- ▶ Water Resources
- ▶ Survey

*Proud sponsor of the Franklin County Chapter of The Ohio Society of Professional Engineers*

**Contact:**  
Ababu Gelaye, CPESC, P.G.  
agelaye@cecinc.com  
614-310-2079

250 Old Wilson Bridge Road  
Suite 250  
Worthington, OH 43085

[www.cecinc.com](http://www.cecinc.com)  
locations nationwide

## Support the EFO in its education mission

### by helping future engineers achieve their goals through scholarships

Founded in 1964 by leaders of the Ohio Society of Professional Engineers, The Engineers Foundation of Ohio (EFO) is a 501(c)(3) tax-exempt, nonprofit educational foundation that was established to raise funds for engineering educational programs. EFO has implemented programs to increase the math, science and technological aptitudes of Ohio's youth.

Granting scholarships each year to graduating high school students, planning on attending college in an engineering curriculum, is part of EFO's mission in promoting engineering education throughout the State of Ohio.

Nearly \$25,000 is distributed each year to up to 25 of Ohio's brightest engineering students. The NSPE Foundation has provided more than \$1.2 million in scholarships over the years. Here are some examples of scholarships awarded in just the last few years to students;

Academic year 2014-15

\$27,300 and 19 scholarships available

\$22,300 and 16 scholarships paid

Academic year 2013-14

\$27,300 and 19 scholarships available

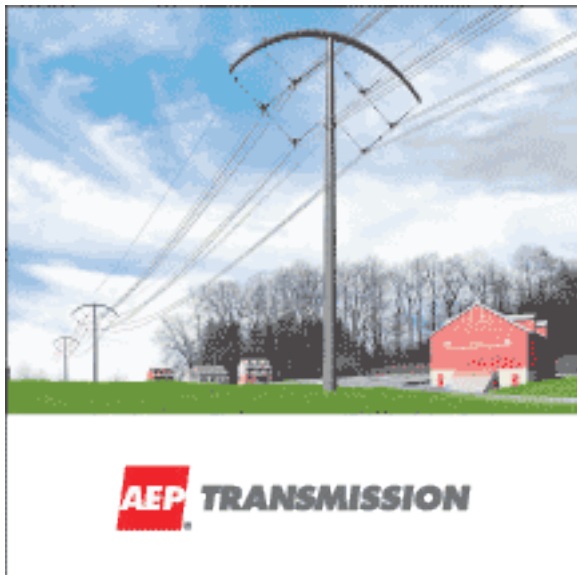
\$22,300 and 16 scholarships paid

Academic year 2012-13

\$27,300 and 19 scholarships available

\$24,300 and 17 scholarships paid

These scholarships can make a big difference to these students as they begin their educational career in engineering.



Principals and guidance counselors are contacted at high schools throughout Ohio each year to make students aware of this financial support availability.

While I was president of the Engineers Foundation of Ohio I became aware of the decreasing number of applications being submitted by graduating high school students planning on attending college in an engineering curriculum.

We need member help ensuring high school awareness of these scholarships in the Chapter areas. If you know high school principals and guidance counselors or students who are planning on a career in engineering, spread the word about EFO scholarships.

Applications and the "brochure" with information on the minimum criteria for our scholarships and which scholarships are being offered this year are available on-line at [ohioengineer.com](http://ohioengineer.com) or through the EFO Manager of Administration Pam McClure at (614) 223-1177.

**Scholarship applications must be received by the OSPE office no later than 5:00 pm on January 15, 2017.**

SANDS  
DECKER  
CPS  
INDUSTRIES • SURVEYORS

CIVIL ENGINEERS &  
SURVEYORS

WWW.SANDSDECKERCPS.COM 866-277-0600

ATHENS LOGAN COLUMBUS ZANESVILLE

ms

ms consultants, inc.  
engineers, architects, planners

FIRST CLASS

OHIO SOCIETY OF  
PROFESSIONAL ENGINEERS  
Franklin County Chapter  
P.O. Box 69  
Reynoldsburg, Ohio 43068



Highway | Railroads  
Structural & Traffic Studies  
Water Resources | Environmental  
Federal | Infrastructure  
GIS, Surveying & Mapping | Energy  
Program & Project Management

3650 Olentangy River Road, Suite 110 | Columbus, Ohio 43214  
614-470-9750 | [www.patrickco.com](http://www.patrickco.com)



**Terracon**  
Consulting Engineers and Scientists  
Offices Nationwide • [terracon.com](http://terracon.com)

Kevin M. Ernst, P.E., Office Manager  
[Kevin.Ernst@terracon.com](mailto:Kevin.Ernst@terracon.com)

800 Morrison Road  
Gahanna OH 43230

(614) 328 5168 [terracon.com/Columbus](http://terracon.com/Columbus)

Environmental   Facilities   Geotechnical   Materials




G R E S H A M  
S M I T H   A N D  
P A R T N E R S

ARCHITECTURE ENGINEERING INTERIORS PLANNING

155 East Broad Street | PNC Plaza, Suite 900  
Columbus, OH 43215  
614.221.0678

[www.greshamsmith.com](http://www.greshamsmith.com)



Daniel J. Lauletta  
CFP®, ChFC®, CLU®, AEP  
*Financial Advisor  
Financial Planner*

**MassMutual**  
FINANCIAL GROUP®

Lighthouse Wealth Solutions  
9200 South Hills Blvd.,  
Suite 100  
Broadview Heights, OH 44147  
Office (440) 746-8762  
Cell (440) 319-0739  
Fax (440) 746-9950  
[djauletta@financialguide.com](mailto:djauletta@financialguide.com)  
[massmutual.com/lighthouse-wealth-solutions](http://massmutual.com/lighthouse-wealth-solutions)