



# Columbus Engineer

## Franklin County Chapter

A chapter chartered by the Ohio Society of Professional Engineers.

P.O. Box 69

Reynoldsburg, OH 43068-0069

May 2023

Vol. 81 No. 8



### President's Message

Nathan Abele, P.E.  
– FCC President



On April 6<sup>th</sup> Mehrdad Rowhani provided a presentation on Slope Stabilization and Methods of Landslide Remediation. On May 4 Ken Goodson, PE, HFDP, LEED AP is scheduled to present on Healthy Buildings. Be on the lookout for additional information.

We will be sending some minor changes to our Constitution and Bylaws for approval soon to be followed by the ballot for officers. We are targeting June for our officer installation.

Thank You to all who have supported our programs. We could not have the programs and events without the volunteers stepping up to help.

Nathan Abele, PE  
FCC-OSPE President



### OSPE-FCC

## May Luncheon Program

**Date:** Thursday, May 4, 2023

**Place:** Hickory House

550 Officecenter Pl., Gahanna, OH

**Time:** Registration: 11:30 am

Lunch: 11:50 am

Speaker: 12:00 pm

Closing Remarks: 1:00 pm

**Cost:** Members: \$25.00 & Non-Members: \$35.00.

SPE@OSU Students: \$10.00

**Registration:** Visit [www.fccospe.org](http://www.fccospe.org). **Pay by check or cash at door.** No access to a computer, contact Steve Day, at 614-876-7525, to help with registration.

**Title:** Healthy Buildings; HVAC and Plumbing Considerations”

**Abstract:** Several options exist for treating and filtering air to mitigate bacteria, even viruses. Filter media and air change rates can be used to obtain specific outcomes Copper surfaces on plumbing fixtures have been shown to reduce infection transmission in hospitals, as well.

**Presenter:** Mr. Ken Goodson, PE, LEED AP, HFDP, Senior Engineer IMEG



- Continued, page 2

May Luncheon Program, continued –

**Biography:** Mr. Ken Goodson, PE, LEED AP, HFDP has a BSME from OSU, 1984; Consulting Engineer for over 37 years. Specialize in Healthcare construction. Learning outcomes:

- "What methods can be used to mitigate virus transmission?"
- Is there a combination of treatment and/or filtration that might work best for my office?
- What is the impact of air change rates on healthy buildings?"

Ken is a member of NSPE, OSPE FCC and ASHRAE. He currently serves as FCC PEC Trustee.

*A certificate for 1 hour of Professional Development for attending the program will be emailed to the attendee*



Save the Dates

All-Ohio Engineering Conference

- Virtual CPD, Thursday-Friday, June 8-9, 2023. 12 CPD hours including professional ethics/rules.
- In-person program (OSPE-EFO Past Presidents' Meeting, Awards Luncheon, OSPE/EFO Annual Meetings & Joint Installation Ceremony at Nationwide Hotel & Conference Center, Saturday, June 10, 2023.
- Clippers-Bats Baseball Game & Dinner at Huntington Park, Saturday, June 10, 2023.
- **Overnight rooms at Nationwide Hotel@ \$169 + tax per night. Call 614-880-4300 with group code 332182 by May 18 deadline.**



Save the Date  
EFO 30<sup>th</sup> Benefit Golf Outing

- Support Kids' Programs & Scholarships, May 5, 2023, New Albany Links Golf Club, New Albany, OH
  - JOIN US FOR; Lunch, Golf, Happy Hour a Steak Dinner, Awards & your chance at Prizes!
- Register at ... <https://ohioengineer.com/>

April 6<sup>th</sup> Luncheon Photos 😊

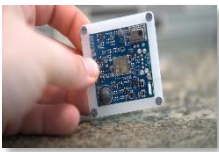


April 6<sup>th</sup> OSPE-FCC Luncheon Program at the Hickory House, Gahanna, Ohio. "Slope Stabilization and Methods of Landslide Remediation", presentation by Mehrdad Rowhani, P.E., PMP.

## Carnegie Mellon University's research on advanced building sensors provokes heated controversy

Occupants of a new university building are concerned over privacy implications.

A research project to test next-generation building sensors at Carnegie Mellon University provoked intense debate over the privacy implications of widespread deployment of the devices in a new 90,000-sf building.



The light-switch-size devices, called Mites, are capable of measuring 12 types of data, including motion and sound.

The sensors were mounted in more than 300 locations throughout the building—on walls and ceilings of hallways, in conference rooms, and in private offices—as part of a research project on smart buildings.

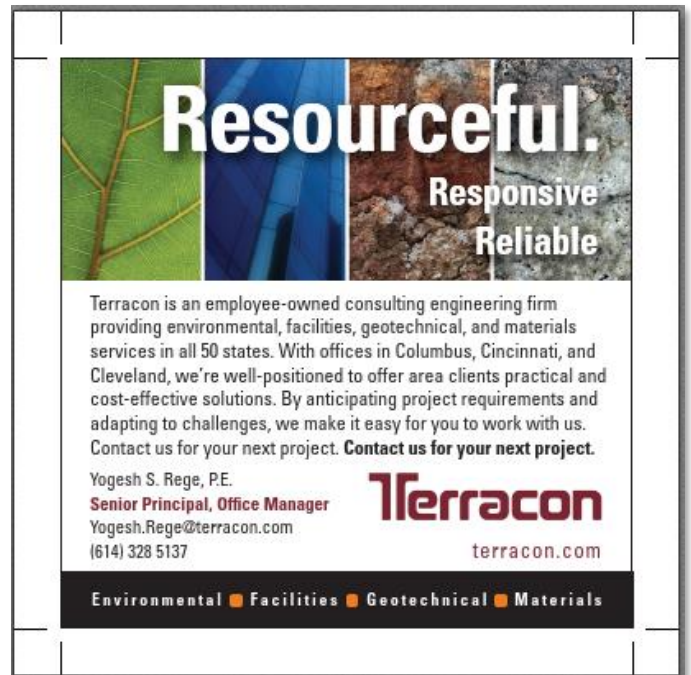
Students and faculty who research the social impacts of technology felt that the device's microphone, infrared sensor, thermometer, and other sensors, would subject them to experimental surveillance. They objected to the fact that the devices were installed without their explicit consent.

Researchers behind the project had taken steps to anonymize data collected by the building sensors, but that didn't staunch concerns by building occupants. The project highlights latent mistrust over technologies that can be used as surveillance devices. "Current IoT systems offer little transparency about exactly what data is being collected, how it is being transmitted, and what security protocols are in place—while erring on the side of over-collection," according to a report in Technology Review.

Widely reported incidents of smart-home devices such as baby monitors, Google Home and Amazon Alexa speakers, and robot vacuums being hacked or having their data shared without users' knowledge or consent, complicate the climate for public acceptance of building sensors.

As work continues on the project, how Carnegie Mellon researchers build in privacy safeguards, and how well they communicate those measures to the university community, may be instructive about whether this technology is accepted by the public.

*(Excerpted from NSPE Daily Designs April 17, 2023, with hyperlinks removed)*



**Resourceful.**  
**Responsive**  
**Reliable**

Terracon is an employee-owned consulting engineering firm providing environmental, facilities, geotechnical, and materials services in all 50 states. With offices in Columbus, Cincinnati, and Cleveland, we're well-positioned to offer area clients practical and cost-effective solutions. By anticipating project requirements and adapting to challenges, we make it easy for you to work with us. Contact us for your next project. **Contact us for your next project.**

Yogesh S. Rege, P.E.  
**Senior Principal, Office Manager**  
Yogesh.Rege@terracon.com  
(614) 328 5137

**Terracon**  
terracon.com

Environmental ■ Facilities ■ Geotechnical ■ Materials



**DANIEL J LAULETTA**  
Founder & CEO

440.319.0739

daniel@laulettaipg.com  
www.laulettaipg.com





## Effort aims to inform state approaches to new nuclear generation

More than 30 utility commissions and energy offices representing 23 states have signed on to join The Advanced Nuclear State Collaborative.

A new collaborative will gather state utility regulators and energy officials across the U.S. to increase understanding of the unique regulatory and policy questions surrounding the consideration and deployment of new nuclear generation.

The Advanced Nuclear State Collaborative, supported by the U.S. Department of Energy (DOE), is being implemented by The National Association of Regulatory Utility Commissioners (NARUC) and the National Association of State Energy Officials (NASEO).

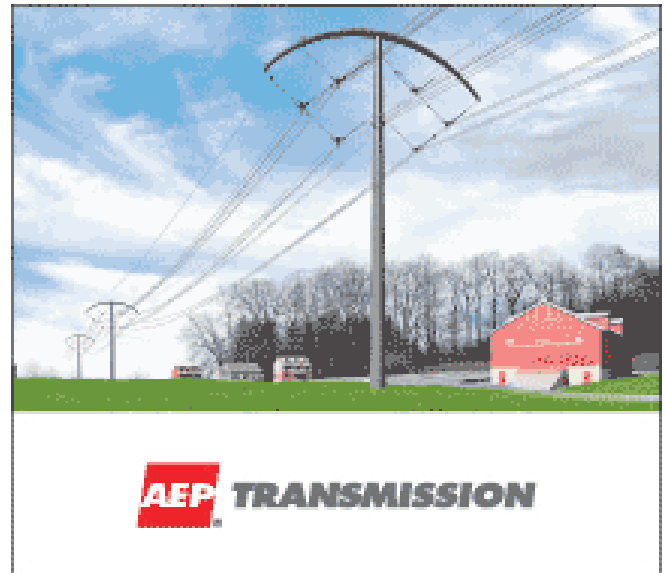
NARUC and NASEO invited states that are considering or actively working toward the deployment of advanced reactors to join the collaborative. Proponents say it offers a unique opportunity to receive direct support from nuclear experts while participating in real-time peer learning. More than 30 utility commissions and energy offices representing 23 states have signed on to join the ANSC.

ANSC activities began in March, with introductory calls from NARUC and NASEO to members. A site visit to Richland, Washington, is scheduled in late April for an in-person ANSC launch workshop.

Other events and resources are expected to be offered to state members throughout the year, including webinars, peer-sharing calls and toolkit resources prepared by NARUC and NASEO.


The ANSC is an initiative of the Nuclear Energy Partnership, a multi-year cooperative agreement established in January 2021 between DOE's Office of Nuclear Energy and NARUC.

(Excerpted from NSPE Daily Designs April 17, 2023)



**PROUDLY DISPLAY YOU ARE A PROFESSIONAL ENGINEER**

Frame your license plate with a black frame and raised white letters. The frames are ideal gift for newly licensed Professional Engineers, or for a spouse, an associate, friend, son or daughter who is a Professional Engineer. This is also a great way to recognize the new Professional Engineer in your organization by presenting them with a Professional Engineer License Plate Frame.



These frames are available through the Franklin County Chapter of the Ohio Society of Professional Engineers, web site: [www.fccospe.org/store/](http://www.fccospe.org/store/). Each frame requires a \$5.00 donation plus Shipping and Handling.

### Austin middle schoolers engineer tool for visually impaired

AUSTIN (KXAN NEWS) — What started off as a middle school science project could soon make a major impact helping those who are visually impaired.

Two eighth graders at the Harmony School of Endeavor engineered a “smart cane” with sonar sensors that detect obstacles up to five feet away. Ahyan Hassan and Hasan Rizvi call it their Pathfinder Project.

Not only did they win the middle school division on their own campus, but they also finished first at the Austin Energy Regional Science Fair. This allowed them to advance to the Texas Science & Engineering Fair at Texas A&M’s Student Center, where they won first place in the Junior- Engineering Technology: Statics and Dynamics category.



“We were only aiming to get to the State Fair,” Rizvi said. “I guess we got that trophy, and we were really excited for that.”

“We put blood, sweat and tears into this, very literally, and we really wanted to win,” Hassan said. “If we didn’t win, we just worked a long time for no reason.”

The boys have been best friends since the third grade. “We have lots of similarities. We both like science and have curiosity when it comes to things,” Hassan explained. “When we see something, we automatically want to know how it works or why it works.”

This year, they had high hopes of coming up with an award-winning science project.

Their inspiration came from one of their grandfather’s old canes.

(Excerpted from NSPE Daily Designs April 20, 2023 hyperlinks removed)



We are engineers. We are scientists.  
We are designers. S&ME has the versatility you need and the experience that matters.

**BUILT FOR VERSATILITY**

Geotechnical // Construction Services // Transportation  
Energy + Environmental // Planning + Design

6190 Enterprise Court, Dublin, OH 43016  
Columbus | Cincinnati | Cleveland  
[www.smeinc.com](http://www.smeinc.com)



**ENGINEERS, ARCHITECTS, PLANNERS**  
Proudly serving Ohio for more than 58 years  
[msconsultants.com](http://msconsultants.com)



## 2023 CALENDAR

DATE	TIME	DESCRIPTION
Jan. 6	5:00 p.m.	Deadline for January Columbus Engineer
Jan. 10	12:00 p.m.	FCC Board Meeting @ CEC, Inc. and Virtual
Jan. 13	5:00 p.m.	Deadline for February Columbus Engineer
Jan. 19	12:00 p.m.	Program: Title "Engineering Advocacy in the 21 <sup>st</sup> Century – From Austerity to Abundance" – Presenter: Conrad Robinson
Feb. 10	5:00 p.m.	Deadline for March Columbus Engineer
Feb. 11	8:00 a.m.	Regional MathCounts Competition @ CSCC
Feb. 14	12:00 p.m.	FCC Board Meeting @ CEC, Inc. and Virtual
Feb. 19 – 25		National Engineer's Week
Feb. 23	11:30 a.m.	Program: E-Week Luncheon - Villa Milano – Theme: "Creating The Future"
Feb. 22	8:00 a.m. – 3:00 p.m.	Engineer for a Day Program
Mar. 2	12:00 p.m.	Program: Title "Camp Ravenna Master Plan and Stormwater Control" – Presenter: Dustin Doherty
Mar. 2 – 3		Engineer's Leadership Institute
Mar. 10	5:00 p.m.	Deadline for April Columbus Engineer
Mar. 11	8:15 a.m. – 4:00 p.m.	Ohio MathCounts Competition @ CSCC (OSPE, see <a href="http://www.ohioengineer.com">www.ohioengineer.com</a> )
Mar. 14	12:00 p.m.	FCC Board Meeting @ CEC, Inc. and Virtual
Mar. 24	12:00 p.m.	OSPE Lunchtime Legislative Briefing, Zoom meeting
Mar. TBD		District Science Day @ CSCC
Apr. 6	12:00 p.m.	Program: Title "Slope Stabilization and Methods of Landslide Remediation: – Presenter: Mehrdad Rowhani
Apr. 11	12:00 p.m.	FCC Board Meeting @ CEC, Inc. and Virtual
Apr. 14	5:00 p.m.	Deadline for May Columbus Engineer
Apr. TBD		Legislative Day
May 4	12:00 p.m.	Program: Title "Healthcare" – Presenter: Ken Goodson
May 9	12:00 p.m.	FCC Board Meeting @ CEC, Inc. and Virtual
May 12	12:00 p.m.	Deadline for June Columbus Engineer
May 18	6:30 p.m.	Chapter Officer Installation & Awards Dinner
June 1	12:00 p.m.	Program: Title "Environmental Permitting" – Presenter: Rao Chitikela
June 2	5:00 p.m.	Deadline for July Columbus Engineer
June 13	12:00 p.m.	FCC Board Meeting @ CEC, Inc. and Virtual
June 30	12:00 p.m.	OSPE Lunchtime Legislative Briefing, Zoom meeting
July TBD	(TBA)	FCC Budget Meeting - Location to be announced

**Civil & Environmental Consultants, Inc.**  
Address: 250 Old Wilson Bridge Road, Suite 250, Worthington, Ohio 43085

### WHERE DO I GET MORE INFORMATION?

FCC-OSPE President E-mail & Phone:	<a href="mailto:nabele@smeinc.com">nabele@smeinc.com</a>	(614) 746-7243
FCC-OSPE WEBSITE:	<a href="http://www.fccospe.org">www.fccospe.org</a>	
OSPE WEBSITE:	<a href="http://www.ohioengineer.com">www.ohioengineer.com</a>	
NSPE WEBSITE:	<a href="http://www.nspe.org">www.nspe.org</a>	
To volunteer to help with MATHCOUNTS:	<a href="mailto:benjamin_brown68@yahoo.com">benjamin_brown68@yahoo.com</a>	(614) 519-8978
To volunteer to help with Science Day:	<a href="mailto:baba.yahaya@terracon.com">baba.yahaya@terracon.com</a>	(614) 328-5209
To volunteer to help with OSU Student Chapter:	<a href="mailto:Kayla.saggio@gmail.com">Kayla.saggio@gmail.com</a>	
To volunteer to help with Imagine Engineering:	TBD	
FCC Luncheons / Programs:	<a href="mailto:ddoherty@cecinc.com">ddoherty@cecinc.com</a>	(614) 359-6321
New Members / Membership Application	www.nspe.org or <a href="http://www.ohioengineer.com">www.ohioengineer.com</a>	(614) 223-1144

**2022-2023 OFFICERS,  
TRUSTEES & COMMITTEE CHAIRS**

	Name	Phone # (w) or (h)	Cell Phone #	E-mail Address
President	<b>Nathan Abele, PE</b>	614-793-2226 (w)	614-746-7243 (cell)	<a href="mailto:Nabele@smeinc.com">Nabele@smeinc.com</a>
Vice President	<b>Mehrdad Rowhani, PE</b>	614-389-4132 (w)	773-517-1036 (cell)	<a href="mailto:mehrdadrowhanipe@gmail.com">mehrdadrowhanipe@gmail.com</a>
Chapter Secretary	TBD			
Treasurer	<b>Steve Day, PE</b>	614-876-7525 (w)	614-531-2858 (cell)	<a href="mailto:lday1@columbus.rr.com">lday1@columbus.rr.com</a>
Past President	<b>Baba Yahaya, PE</b>	614-328-5209 (w)	614-517-7864 (cell)	<a href="mailto:Baba.Yahaya2@terracon.com">Baba.Yahaya2@terracon.com</a>
Administrative Assistant	<b>Dawn Morrison</b> <b>FCC-OSPE Website</b>	614-328-5148 (w)	614-313-3814 (cell)	<a href="mailto:dawn.morrison@terracon.com">dawn.morrison@terracon.com</a> <a href="http://www.fccospe.org">www.fccospe.org</a>
OSPE Executive Director	<b>Tim Schaffer</b>	614-223-1144 (w)		<a href="mailto:exec@ohioengineer.com">exec@ohioengineer.com</a>
OSPE/EFO Staff	<b>Pam McClure (ret., part-time)</b> <b>Holly Ross</b>	614-223-1144 (w-OSPE) 614-223-1177 (w-EFO)		<a href="mailto:admin@ohioengineer.com">admin@ohioengineer.com</a> <a href="mailto:pr@ohioengineer.com">pr@ohioengineer.com</a>
VICE-PRESIDENT	TRUSTEE/COMMITTEE	CHAIRPERSON	TELEPHONE	E-MAIL
Mehrdad Rowhani, PE	Vice-President	Mehrdad Rowhani, PE	614-389-4132 (w) 773-517-1036 (cell)	<a href="mailto:mehrdadrowhanipe@gmail.com">mehrdadrowhanipe@gmail.com</a>
	Programs/CPD/Activity	Dustin Doherty, PE, CPESC	614-310-2075 (w) 614-359-6321 (cell)	<a href="mailto:ddoherty@cecinc.com">ddoherty@cecinc.com</a>
	Membership	Dustin Doherty, PE, CPESC	614-310-2075 (w) 614-359-6321 (cell)	<a href="mailto:ddoherty@cecinc.com">ddoherty@cecinc.com</a>
	Young Engineer Trustee	Colleen Konsavage, PE	614-758-3048 (cell)	<a href="mailto:Ckonsav1@gmail.com">Ckonsav1@gmail.com</a>
	Retired Engineers Trustee	Bob Fuller, P.E.	614-880-9221 (h)	<a href="mailto:barbarafuller6438@att.net">barbarafuller6438@att.net</a>
	PEHE Trustee	Tim McCarthy, PE	614-670-1175 (cell)	<a href="mailto:tim_mccarthy@breezelineohio.net">tim_mccarthy@breezelineohio.net</a>
	OSU - Student Chapter Liason	Kayla Saggio, EI		<a href="mailto:Kayla.saggio@gmail.com">Kayla.saggio@gmail.com</a>
	Vice-President	TBD		
	Science Day (District)	Baba Yahaya, PE	614-328-5209 (w) 614-517-7864 (cell)	<a href="mailto:Baba.Yahaya2@terracon.com">Baba.Yahaya2@terracon.com</a>
	Scholarship	Joe Sullivan, PE	614-486-4383 (w) 614-561-5447 (cell)	<a href="mailto:jsullivan@msconsultants.com">jsullivan@msconsultants.com</a>
	Columbus Engineer - Editor	Howard Jones, PE	614-209-3289 (cell)	<a href="mailto:hrjones63@yahoo.com">hrjones63@yahoo.com</a>
	Engineers Week	CR Weaver, PE	614-645-7100 (w)	<a href="mailto:CRWeaver@columbus.gov">CRWeaver@columbus.gov</a>
	Engineer For A Day	Kayla Saggio, EI		<a href="mailto:kayla.saggio@gmail.com">kayla.saggio@gmail.com</a>
	PEG Trustee	CR Weaver, PE	614-645-7100 (w)	<a href="mailto:CRWeaver@columbus.gov">CRWeaver@columbus.gov</a>
S. Rao Chitikela, PE	Vice-President	S. Rao Chitikela, PE	412-310-9452 (cell) 614-818-4900 (w)	<a href="mailto:srao.chitikela@gmail.com">srao.chitikela@gmail.com</a>
	MATHCOUNTS Chair	Ben Brown, PE	614-519-8978 (cell)	<a href="mailto:ben.brown@ibigroup.com">ben.brown@ibigroup.com</a>
	Awards/Citations	Tina Sutermeister, PE	614-537-7660 (cell)	<a href="mailto:tsuterm@embarqmail.com">tsuterm@embarqmail.com</a>
	Legislative	Steve Day, PE	614-876-7525 (w) 614-531-2858 (cell)	<a href="mailto:lday1@columbus.rr.com">lday1@columbus.rr.com</a>
	PEI Trustee	Richard Smelker, PE	614-933-2236 (w)	<a href="mailto:rdsmelker@aep.com">rdsmelker@aep.com</a>
	EFO Liason	Steve Day, PE	614-876-7525 (w) 614-531-2858 (cell)	<a href="mailto:lday1@columbus.rr.com">lday1@columbus.rr.com</a>
	Chapter Directory	Zach Wedekind, EI		<a href="mailto:zwedekind@gmail.com">zwedekind@gmail.com</a>
Colleen Konsavage, PE	Vice-President	Colleen Konsavage, PE	614-758-3048 (cell)	<a href="mailto:Ckonsav1@gmail.com">Ckonsav1@gmail.com</a>
	Imagine Engineering Contest	TBD		
	Auxiliary Trustee	TBD		
	OSPE Director	Tina Sutermeister, PE	614-537-7660 (cell)	<a href="mailto:tsuterm@embarqmail.com">tsuterm@embarqmail.com</a>
	Constitution & By-Laws	Tina Sutermeister, PE	614-537-7660 (cell)	<a href="mailto:tsuterm@embarqmail.com">tsuterm@embarqmail.com</a>
	PEPP Trustee	Greg Nortz, PE	614-790-0029 (cell)	<a href="mailto:gregnortz@otisengineering.com">gregnortz@otisengineering.com</a>
	PEPP Trustee	Nathan Abele, PE	614-793-2226 (w) 614-746-7243 (cell)	<a href="mailto:Nabele@smeinc.com">Nabele@smeinc.com</a>
	PEC Trustee	Ken Goodson, PE	614-443-1178 (w)	<a href="mailto:kengoodson@hotmail.com">kengoodson@hotmail.com</a>



FIRST CLASS



OHIO SOCIETY OF  
PROFESSIONAL ENGINEERS  
Franklin County Chapter  
P. O. Box 69  
Reynoldsburg, Ohio 43068



Monday, May 29<sup>th</sup>, 2023