



Columbus Engineer

Franklin County Chapter

A chapter chartered by the Ohio Society of Professional Engineers.

P.O. Box 69
Reynoldsburg, OH 43068-0069

June 2020
Vol. 78 No. 11

President's Message

Dustin Doherty, P.E., CPESC
– FCC President



The past year was a productive one for the Franklin County Chapter. Last year we hosted several membership drives, coordinated with the OSU student chapter on many occasions, and were able to keep our membership numbers relatively flat through the ever changing cultural climate we find ourselves in. We were able to weather this well because of many individuals who contribute so much of their personal time and commitment. With considerable resources and excellent, sustained support from our board members and all volunteers – thank you for your involvement in causing this chapter to continue to thrive.

Looking ahead, the rest of 2020 should be another full year, particularly as things begin to turn to normal again. We will host a virtual officer installation meeting, to allow several new members to become trustees and VPs. Stay tuned for more information as to when this virtually meeting will be scheduled.

In closing, thank you for your continued support of the FCC.



construction
technology
engineering + design
management services

PATRICK smart people.
bright ideas.
powerful results.

www.patrickco.com | 800.799.7050

2020 FCC-OSPE Outstanding Engineering Student Award

The FCC-OSPE Outstanding Engineering Student award is presented to an engineering student from an ABET-accredited Ohio Engineering school in the Franklin County Chapter area based on the student's scholastic achievements, participation in professional, technical, and other college activities, contributions to their fellow students, and participation in community service.



This year's recipient, Kara McLaughlin, was a Senior in the Department of Civil, Environmental and Geodetic Engineering at The Ohio State University main campus in Columbus, Ohio. She had a very strong undergraduate education and service record at OSU. She had an overall Grade Point of 3.867 and a Grade Point average of 3.955 in courses through the College of Engineering.

Kara also participates as a teaching assistant and intern while at OSU. As an Undergraduate Teaching Assistant with the Engineering Education Department for three years, she taught first-year engineering students to use Excel, MATLAB, SolidWorks, and design and program an autonomous vehicle. In 2018, she worked as a Project Management Intern for Pepper Construction Company of Ohio. She stated that:

“I increased my leadership skills by organizing pre-installation meetings between the project management team, owner, and subcontractor. I also strengthened my technical communication skills by documenting all progress made on two warehouses by creating weekly and monthly reports.”

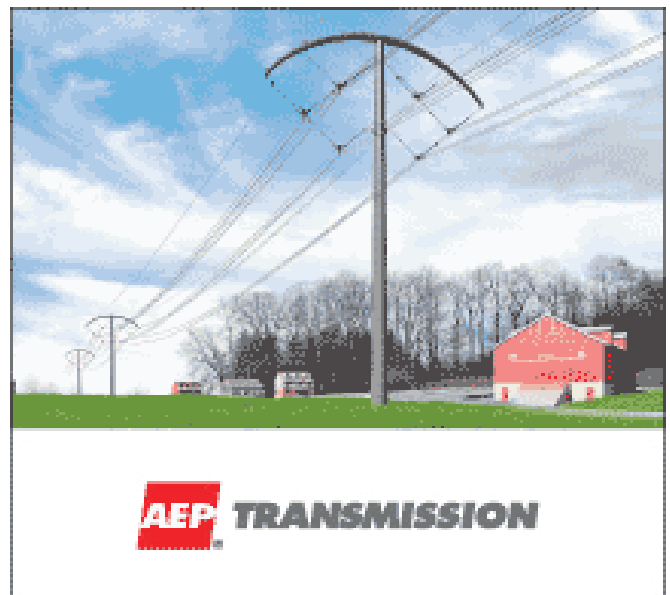
In 2019, she worked as a Bridge Design Intern at Fishbeck. During this position, she evaluated structural systems by calculating load ratings utilizing Bridge Rating software for bridges and culverts. She designed concrete box beam bridges in LEAP and steel I-beam bridges in Mdx for a proposal, which was an informative process. Kara has an interest in working on larger and more complex projects, specifically vertical design projects, which she believes will be a fulfilling career for her.

To gain more insight on cutting-edge research, Kara joined the Versatile Structures Lab as a research assistant under the guidance of Dr. Hu. The purpose of the research was to create adaptive structures to solve problems related to the control of water flow through a defined area. Initial design configurations were modeled in SolidWorks to determine how the connections would allow the structure to articulate. Prototypes were constructed using foam blocks that were attached using fiberglass coated in resin. At the joints, no resin was used to promote the flexibility of the joint. Different shapes and arrangements of shapes were tested in a flume to determine the ability of each prototype to control the flow of water.

These adaptive structures could potentially be implemented as flood walls to allow a longer reaction time to resolve issues and prevent catastrophe. Kara stated that this research opportunity was very fulfilling for her and allowed her to learn additional information that was not covered in her course work at OSU.

While at OSU, she was an active member of the OSU Student Chapter of the Structural Engineers Association of Ohio (SEAO). For the 2019-2020 school year, she was the Treasurer of the SEAO Chapter. She was also the Interim Education Director of the Society of Women Engineers (SWE)) of which she had been a member since 2017. She was the Committee Chair of Student Registration for the 2019 SWE Career Fair, Big in Big Little Program. She has been an active member of the American Society of Civil Engineers since August of 2016. She also served as a mentee in the Department of Civil, Environmental and Geodetic Engineering Mentoring Program from September 2017 through May 2018.

Kara McLaughlin is a worthy recipient of the 2020 FCC-OSPE Outstanding Engineering Student Award.





**The Ohio State University and
Autumn Semester Planning**
-by Tim McCarthy, PE



Every business and workplace is grappling with the best way to return to work during the current COVID-19 situation. One of the largest workplaces in Central Ohio is The Ohio State University. The COVID-19 pandemic has greatly affected all university operations, faculty, staff, and students. The university is gradually resuming “normal” operations using a phased approach and following guidance from state and local health authorities.

Recent announcements are that in-person classes will resume for the autumn semester. The autumn semester’s first day of classes will be August 25 and the academic calendar will be adjusted as part of the return plan. In order to maintain physical distancing when students are welcomed back to campus in the fall, the university will reduce population density in residence halls. The university will soon outline details of the plan to promote physical distancing in on-campus housing and dining locations.

As part of Ohio State’s phased approach, a limited number of academic, clinical and athletics operations are already resuming with safety protocols in place.

These include elective procedures at the Wexner Medical Center; some research and creative expression activities in laboratories, studios and research spaces; limited operations for student training at the College of Dentistry; and the university’s child care facilities.

At this time, all non-essential university employees who are not part of an exempted operation or function are to continue teleworking and remain off campus. The summer session is proceeding with on-line learning for most classes. Courses are being offered at a 25% discounted tuition rate in light of the disruptions caused by COVID-19.

University leaders are currently working on a plan to enable student-athletes to resume practice and competition. This includes the phased reopening of the Woody Hayes Athletic Center and the Schumaker Complex. Final plans for all sports will be subject to decisions made by the Big Ten Conference and NCAA, and directives of state and local health authorities. Final decisions have not yet been made regarding the football season.

“The task force (OSU’s COVID-19 Transition Task Force) has been and will remain laser-focused on the safety and well-being of the university community,” said Gail Marsh, Ohio State’s chief strategy officer and chair of the COVID-19 Transition Task Force. “This process has required a comprehensive look at the entirety of Ohio State, which is effectively a city within a city, and collecting vast amounts of data to make evidence-based decisions.



**2020 FCC-OSPE and OSPE
Professional Management Award**

- **By Tina Sutermeister, P.E., F.NSPE**

The FCC-OSPE Professional Management award recognizes leadership, organizational, and management skills in an engineering environment. The award recipient shall be an active member in good-standing in the Franklin County Chapter of OPSE and in OSPE and emphasis is placed on continuous service to the Chapter and to the State. This year's award recipient, Thomas E. Mosure, Sr., P.E., is a Professional Engineer/Executive with over 40 years of proven experience in business development, management of projects and personnel, technical knowledge and project quality design. Throughout his Engineering career, Tom has been a role model for other Engineers and Executives by displaying exemplary leadership, organizational, and management skills in all Engineering positions that he has held.



Thomas E. Mosure, P.E. is the President and CEO of ms Consultants, Inc. and has been a member of NSPE, OSPE and FCC-OSPE since 1979. From early on in his career, Tom has supported the need for Professional Engineering licensing as Tom is currently a Professional Engineer in Ohio, Pennsylvania and 27 other states where he conducts business.

Tom served on the FCC-OSPE Board in the late 1980's into the 1990's. Tom received a Master of Science in Civil Engineering from Youngstown State University in 1984 and a Bachelor of Science in Civil and Environmental Engineering from the University of Cincinnati in 1978.

In addition to Tom's involvement in NSPE, OSPE and FCC-OSPE, he was the Vice Chairman of the American Council of Engineering Companies (ACEC) from 2016 through 2018. He also had held numerous roles with ACEC of Ohio: National Director, President, Treasurer, Board Member, Political Action Committee Chair, Federal Agencies and Procurement Advocacy Committee Member, and Design Professionals Coalition Member. Tom is also a Life Member of the American Society of Civil Engineers (ASCE) and is a Past Committee member of ASCE. He is also a corporate member of the American Institute of Architects (AIA).

In addition to the FCC-OSPE/OSPE activities that Tom has been involved in, Tom has been active in other areas that positively impact the community. He is a Central Ohio Diabetes Association Supporter, Children's Hunger Alliance and Lifecare Alliance supporter. As well as Tom has been active in the Columbus Engineers Club.

Tom maintains his dedication to serving the client and ensuring that the reputation for supplying quality design, planning, and management solutions is practiced daily throughout the company staff. He accomplishes this through sound management practices, application of technology and continuing education company-wide as well as a personal dedication to all stakeholders – customers and staff alike.

Thomas E. Mosure, P.E. is a worthy recipient of the FCC-OSPE Professional Management Award as well as he also received the award at the State level - 2020 OSPE Professional Management Award at the virtual-held All Ohio Engineering Conference on Saturday, June 13th. FCC-OSPE has delayed having the Annual FCC-OSPE Awards and Installation Banquet normally held in May each year. All FCC-OSPE members and award guests will be notified when this Annual Banquet is rescheduled.



Terracon
Consulting Engineers and Scientists
Offices Nationwide • terracon.com

Kevin M. Ernst, P.E., Office Manager
Kevin.Ernst@terracon.com

800 Morrison Road
Gahanna OH 43230

(614) 328 5168 terracon.com/Columbus

Environmental Facilities Geotechnical Materials

Court rejects bid to revive cancelled US pipeline program

A federal appeals court on Thursday turned down the Trump administration's request to revive a permit program for new oil and gas pipelines, an outcome that industry representatives said could delay more than 70 projects across the U.S. and cost companies up to \$2 billion.

The case originated with a challenge by environmentalists to the Keystone XL crude oil pipeline from the oil sands region of Canada to the U.S. It's now affecting oil and gas pipeline proposals across the nation.

The U.S. Army Corps of Engineers permitting program allows pipelines to be built across streams and wetlands with minimal review if they meet certain criteria. Environmental groups contend the program, known as Nationwide Permit 12, leaves companies unaccountable for damage done to water bodies during construction.

“This is huge,” said Jared Margolis with the Center for Biological Diversity. “Hopefully this gives us a chance to put a pause on these major oil pipelines.”

Army Corps spokesman Doug Garman said the agency was not commenting because the matter is still in litigation.

Government attorneys, backed by 19 states and numerous industry groups, had argued the cancellation would delay construction of pipelines used to deliver fuel to power plants and other destinations.

U.S. District Judge Brian Morris in Montana said in a pair of recent rulings in the Keystone case that Army Corps officials had failed to adequately consult with wildlife agencies before reauthorizing the permitting program in 2017. Its continued use could cause serious harm to protected species and critical wildlife habitat, he said.

A two-judge panel of the 9th U.S. Circuit Court of Appeals denied an emergency request to block Morris' ruling. They said in a one-page decision that the government, states and industry groups had not demonstrated sufficient harm to justify reviving the program while the case is still pending.

The issue could take months to resolve barring further court intervention.

In the absence of the nationwide permit, companies will have to apply for numerous individual construction permits on lines that sometimes cross hundreds of water bodies. That could cause delays of a year or more on more than 70 pending pipelines, increasing their combined costs by \$2 billion, said Paul Afonso, chief legal officer for the American Petroleum Institute.

(Modified excerpt from NSPE Daily Designs, June 1, 2020)



2019-2020 OFFICERS,
TRUSTEES & COMMITTEE CHAIRS

	Name	Phone # (w) or (h)	Cell Phone #	E-mail Address
President	Dustin Doherty, PE, CPESC	614-310-2075 (w)	614-359-9321 (cell)	ddoherty@cecinc.com
Vice President/Pres. Elect	TBD			
Chapter Secretary	Baba Yahaya, PE	614-863-3113 (w)	614-517-7864 (cell)	Baba.Yahaya2@terracon.com
Treasurer	Steve Day, PE	614-876-7525 (w)	614-531-2858 (cell)	lday1@columbus.rr.com
Past President	Ben Brown, PE	614-818-4900 (w)	614-519-8978 (cell)	ben.brown@ibigroup.com
Administrative Assistant	Dawn Morrison	614-328-5148 (w)	614-313-3814 (cell)	dawn.morrison@terracon.com
	NEW FCC-OSPE Website			www.fccospe.org
OSPE Executive Director	Tim Schaffer	614-223-1144 (w)		exec@ohioengineer.com
OSPE/EFO Staff	Pam McClure	614-223-1144 (w-OSPE)		admin@ohioengineer.com
	Holly Ross	614-223-1177 (w-EFO)		pr@ohioengineer.com
VICE-PRESIDENT	TRUSTEE/COMMITTEE	CHAIRPERSON	TELEPHONE	E-MAIL
Dustin Doherty, PE, CPESC	Vice-President	Dustin Doherty, PE, CPESC	614-310-2075 (w) 614-359-6321 (cell)	ddoherty@cecinc.com
	Programs/CPD/Activity	Erik Briedis, PE	614-468-6222 (w) 513-265-4938 (cell)	ebriedis@cecinc.com
	Membership	Dustin Doherty, PE, CPESC	614-310-2075 (w) 614-359-6321 (cell)	ddoherty@cecinc.com
	Young Engineer Trustee	Dustin Doherty, PE, CPESC	614-310-2075 (w) 614-359-6321 (cell)	ddoherty@cecinc.com
	Retired Engineers Trustee	TBD		
	PEHE Trustee	Tim McCarthy, PE	614-315-9551 (cell) 614-247-1561 (w) 614-670-1175 (cell)	mccarthy.226@osu.edu
	OSU - Student Chapter Liason	Tim McCarthy, PE	614-247-1561 (w) 614-670-1175 (cell)	mccarthy.226@osu.edu
Yogesh Rege, PE	Vice-President	Yogesh Rege, PE	614-328-5137 (w) 304-951-7874 (cell)	yogesh.rege@terracon.com
	Science Day (District)	Yogesh Rege, PE	614-328-5137 (w) 304-951-7874 (cell)	yogesh.rege@terracon.com
	Scholarship	Joe Sullivan, PE	614-486-4383 (w) 614-561-5447 (cell)	joe.sullivan@stantec.com
	Columbus Engineer - Editor	Howard Jones, PE	614-209-3289 (h) 614-209-3289 (cell)	hrjones63@yahoo.com
	Engineers Week	CR Weaver, PE	614-645-7100 (w) 614-946-2961 (h)	CRWeaver@columbus.gov
	Engineer For A Day	Charles Ohrstedt, PE	614-937-1512 (cell)	mohrstedt@sbcglobal.net
	PEG Trustee	Ron Trivisonno, PE	614-328-5137 (w) 614-395-7098 (cell)	ronald.trivisonno@terracon.com
Erick Briedis, PE	Vice-President	Erik Briedis, PE	614-468-6222 (w) 513-265-4938 (cell)	ebriedis@cecinc.com
	MATHCOUNTS Chair	Ben Brown, PE	614-818-4900 (w) 614-519-8978 (cell)	ben.brown@ibigroup.com
	Awards/Citations	Tina Sutermeister, PE	740-964-0828 (h) 614-537-7660 (cell)	tsuterm@embarqmail.com
	Legislative	Steve Day, PE	614-876-7525 (w) 614-531-2858 (cell)	lday1@columbus.rr.com
	PEI Trustee	Richard Smelker, PE	614-933-2236 (w)	rdsmelker@aep.com
	EFO Liaison	Steve Day, PE	614-876-7525 (w) 614-531-2858 (cell)	lday1@columbus.rr.com
	Chapter Directory	Erik Briedis, PE	614-468-6222 (w) 513-265-4938 (cell)	ebriedis@cecinc.com
Mehrdad Rowhani, PE	Vice-President	Mehrdad Rowhani, PE	614-328-1197 (w) 773-517-1036 (cell)	Mehrdad.Rowhani@terracon.com
	Imagine Engineering Contest	Devon Seal, PE	614-221-0678 (b) 614-208-6986 (cell)	devonseal1@gmail.com
	Auxiliary Trustee	Barbara Fuller	614-880-9221 (h)	bfuller@columbus.rr.com
	OSPE Director	Kevin Ernst, PE	(614) 863-3113 (w) (614) 203-1199 (cell)	Kevin.Ernst@terracon.com
	Constitution & By-Laws	Devon Seal, PE	614-221-0678 (b) 614-208-6986 (cell)	devonseal1@gmail.com
	PEPP Trustee	Liz Barrow, PE	614-793-7796 (w) 502-417-9756 (cell)	Liz.Barrow@terracon.com
	PEPP Trustee	S. Rao Chitikela, PE	412-310-9452 (cell)	srao.chitikela@gmail.com
	PEC Trustee	TBD		

2019-2020 CALENDAR

Jan. 14	5:30 p.m.	FCC Board Meeting @ Civil & Environmental Consultants, Inc.
Jan. 16	5:00 p.m.	Deadline for February <i>Columbus Engineer Newsletter</i>
Jan. 23	11:30 a.m.	Program: "Ohio's Approach to Post-Construction Storm Water Quality Management"
Feb. 8	8:00 a.m.	Regional MathCounts Competition (OSPE, see www.ohioengineer.com)
Feb. 11	5:30 p.m.	FCC Board Meeting @ Civil & Environmental Consultants, Inc.
Feb. 15	5:00 p.m.	Deadline for March <i>Columbus Engineer Newsletter</i>
Feb. 17-21		National Engineer's Week (see www.eweek.com)
Feb. 18	8:00 a.m. – 3:00 p.m.	Engineer For A Day Program 2020
Feb. 20	11:30 a.m.	Program: E-Week Luncheon – Engineers: Pioneers of Progress
Mar. 7	8:15 a.m. – 4:00 p.m.	Ohio State MathCounts Competition (OSPE, see www.ohioengineer.com)
Mar. 10	5:30 p.m.	FCC Board Meeting @ Civil & Environmental Consultants, Inc.
Mar. 19	11:30 a.m.	Program: CANCELLED
Mar. 20	5:00 p.m.	Deadline for April <i>Columbus Engineer Newsletter</i>
Mar. 14	8:00 a.m. ~ 3:30 p.m.	District Science Day @ CSCC
Apr. 14	5:30 p.m.	FCC Board Meeting @ Civil & Environmental Consultants, Inc. <i>(Virtual Meeting)</i>
Apr. 15	5:00 p.m.	Deadline for May <i>Columbus Engineer Newsletter</i>
Apr. 16	11:30 a.m.	Program: CANCELLED
May 12	5:30 p.m.	FCC Board Meeting @ Civil & Environmental Consultants, Inc. <i>(Virtual Meeting)</i>
May 20	5:00 p.m.	Deadline for June <i>Columbus Engineer Newsletter</i>
May 21	6:30 p.m.	Chapter Officer Installation / Awards Dinner - CANCELLED
June 9	5:30 p.m.	FCC Board Meeting @ Civil & Environmental Consultants, Inc. <i>(Virtual Meeting)</i>
July 13	5:30pm	FCC Board Meeting @ Civil & Environmental Consultants, Inc. <i>(Virtual Meeting)</i>
Aug. 10	5:30pm	FCC Board Meeting @ Civil & Environmental Consultants, Inc.

Civil & Environmental Consultants, Inc.
Address: 250 Old Wilson Bridge Rd - Suite 250, Worthington, OH 43085

WHERE DO I GET MORE INFORMATION?

OSPE-FCC President E-mail & Phone:	ddoherty@cecinc.com	(614) 359-6321 c
OSPE-FCC WEBSITE	www.fccospe.org	
OSPE WEBSITE:	www.ohioengineer.com	
NSPE WEBSITE:	www.nspe.org	
To volunteer to help with <i>MATHCOUNTS</i> :	benjamin.brown68@yahoo.com	(614) 519-8978
To volunteer to help with <i>Science Day</i> :	vogesh.rege@terracon.com	(614) 863-3113
To volunteer to help with <i>OSU Student Chapter</i> :	mccarthy.226@osu.edu	(614) 247-1561
To volunteer to help with <i>Imagine Engineering</i> :	devon_seal@gspnet.com	(614) 221-0678
FCC Luncheons / Programs:	ebriedis@cecinc.com	(614) 468-6222
New Members / Membership Application	www.nspe.org or www.ohioengineer.com	(614) 223-1144

FIRST CLASS

OHIO SOCIETY OF
PROFESSIONAL ENGINEERS
Franklin County Chapter
P.O. Box 69
Reynoldsburg, Ohio 43068

skylightfinancialgroup.com

Daniel J. Lauletta CFP, LUTCF, CLU, ChFC, AEP
Financial Planner | Legacy Planning Team

office 440.857.3042
cell 440.319.0739

dlauletta@financialguide.com

2012 W. 25th Street, Suite 900
Cleveland OH | 44113

